

## POLARIZATION MAINTAINING (PM) FUSED COUPLER (1310, 1480, 1550nm)

### Specifications

Contact Ascentta with your custom specification needs.

Parameter		Unit	Value
Wavelength		nm	1310, 1480, or 1550
Bandwidth		nm	±15
Excess Loss		Typ. dB	0.3
Insertion Loss (23°C)	50/50	Max dB	3.4
	20/80	Max dB	7.6/1.4
	10/90	Max dB	11.2/0.85
	5/95	Max dB	14.2/0.6
	1/99	Max dB	21.5/0.3
Extinction Ratio		Min dB	20
Directivity		Min dB	55
Optical Power Handling		Max mW	300
Operating Temperature		°C	-40 to 85
Storage Temperature		°C	-40 to 85

\* The above specifications are for parts without connectors. Adding connectors can affect the IL & ER.

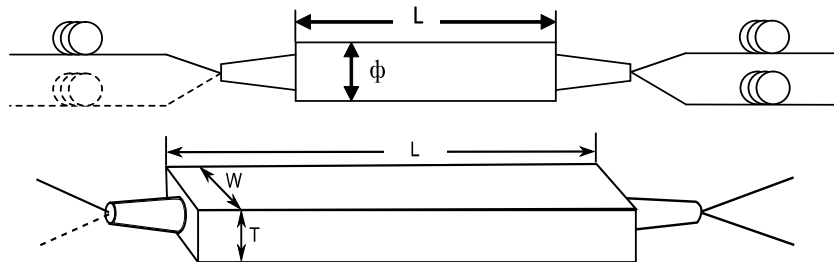
\* Connector key is aligned to slow axis.

### Packaging

Contact Ascentta with your custom configuration needs.

Parameter		250µm bare fiber	900µm loose tube	900µm/3mm loose tube
Configuration		1x2 or 2x2		
Dimension	mm	Φ3.0 x L54	φ3.0 x L54 φ3.0 x L56	L90 x W20 x T10

### Package Diagram



Contact Ascentta for all your custom design needs.

**POLARIZATION MAINTAINING (PM) FUSED COUPLER**  
(1310, 1480, 1550nm)

**Ordering Information**

Contact Ascentta with your custom configuration needs.

PMFC	Type	Wavelength	Coupler Ratio	Port	Package	Fiber Type	Cable Type	Fiber Length	Connector
PMFC (or PMCP)	S=Standard	13=1310	50=50/50	12=1x2	A54=φ3.0 xL54	PM=PM Panda	B=250um	05=0.5m	NE=None
		14=1480	20=20/80	22=2x2	A56=φ3.0xL56	X= Others	O=400um	10=1.0m	FA=FC/APC
		15=1550	10=10/90	X= Others	C10=L90xW20		L=900um	15=1.5m	FC=FC/PC
		X: Others	05=05/95		xT10	W=2mm	20=2.0m	SA=SC/APC	
			02=02/98		X=Others	H=3mm	30=3.0m	SC=SC/PC	
			01=01/99					X=Others	ST=ST/PC
			X=Others						LA=LC/APC
									LC=LC/PC
									X=Others

Contact Ascentta for all your custom design needs.