

## POLARIZATION MAINTAINING (PM) FUSED COUPLER (1310, 1480, 1550nm)

### Specifications

Contact Ascentta with your custom specification needs.

Parameter		Unit	Value
Wavelength		nm	1310, 1480, or 1550
Bandwidth		nm	±15
Excess Loss		Typ. dB	0.3
Insertion Loss (23°C)	50/50	Max dB	3.4
	20/80	Max dB	7.6/1.4
	10/90	Max dB	11.2/0.85
	5/95	Max dB	14.2/0.6
	1/99	Max dB	21.5/0.3
Extinction Ratio		Min dB	20
Directivity		Min dB	55
Optical Power Handling		Max mW	300
Operating Temperature		°C	-40 to 85
Storage Temperature		°C	-40 to 85

\* The above specifications are for parts without connectors. Adding connectors can affect the IL & ER.

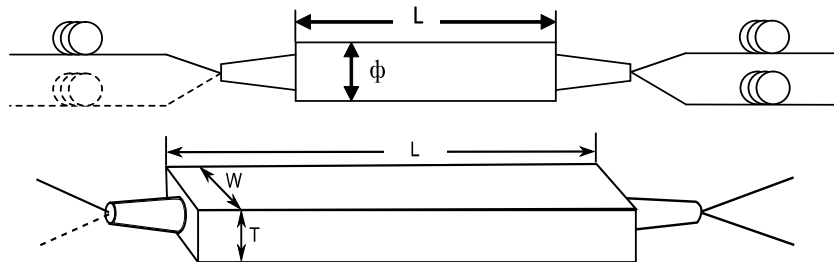
\* Connector key is aligned to slow axis.

### Packaging

Contact Ascentta with your custom configuration needs.

Parameter		250µm bare fiber	900µm loose tube	900µm/3mm loose tube
Configuration		1x2 or 2x2		
Dimension	mm	Φ3.0 x L54	φ3.0 x L54 φ3.0 x L56	L90 x W20 x T10

### Package Diagram



Contact Ascentta for all your custom design needs.

**POLARIZATION MAINTAINING (PM) FUSED COUPLER**  
(1310, 1480, 1550nm)

**Ordering Information**

Contact Ascentta with your custom configuration needs.

PMFC	Type	Wavelength	Coupler Ratio	Port	Package	Fiber Type	Cable Type	Fiber Length	Connector
PMFC (or PMCP)	S=Standard	13=1310	50=50/50	12=1x2	A54=φ3.0 xL54	PM=PM Panda	B=250um	05=0.5m	NE=None
		14=1480	20=20/80	22=2x2	A56=φ3.0xL56	X= Others	O=400um	10=1.0m	FA=FC/APC
		15=1550	10=10/90	X= Others	C10=L90xW20		L=900um	15=1.5m	FC=FC/PC
		X: Others	05=05/95		xT10	W=2mm	20=2.0m	SA=SC/APC	
			02=02/98		X=Others	H=3mm	30=3.0m	SC=SC/PC	
			01=01/99					X=Others	ST=ST/PC
			X=Others						LA=LC/APC
									LC=LC/PC
									X=Others

Contact Ascentta for all your custom design needs.

## POLARIZATION MAINTAINING (PM) FUSED COUPLER (488, 532, 635, 780, 830, 980, 1064nm)

### Specifications

Contact Ascentta with your custom specification needs.

Parameter		Unit	488, 532, or 635	780, or 830	980, or 1064
Bandwidth		nm	±2	±5	±10
Excess Loss	Typ.	dB	0.8	0.5	0.4
	Max	dB	1.2	0.8	0.6
Extinction Ratio ( $\lambda_c$ , 23°C)	Port Coupling Ratio >10%	Min	dB		18
	Port Coupling Ratio >1%, <10%	Min	dB		16
Directivity		Min	dB		50
Return Loss		Min	dB		50
Optical Power Handling		Max	mW	100	2000
Operating Temperature		°C		-5 to 75	
Storage Temperature		°C		-40 to 85	

\* The above specifications are for parts without connectors. Adding connectors can affect the IL, RL, & ER.

\* Optical Power Handling is limited to 1W if connectors are added.

\* Connector key is aligned to slow axis.

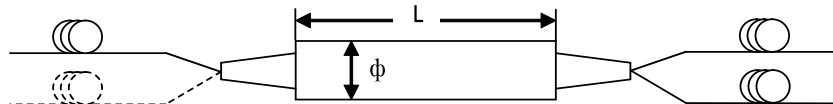
Parameter		Unit	1/99	2/98	5/95	10/90	20/80	30/70	40/60	50/50
Coupling Ratio Tolerance ( $\lambda_c$ )	Max	%	±0.3	±0.5	±0.7	±1.0	±2.0	±2.0	±2.5	±3.0

### Packaging

Contact Ascentta with your custom configuration needs.

Parameter		250µm bare fiber	900µm loose tube
Configuration		1x2 or 2x2	
Dimension	mm	φ3.0 x L60	φ3.0 x L76

### Package Diagram



Contact Ascentta for all your custom design needs.

**POLARIZATION MAINTAINING (PM) FUSED COUPLER**  
 (488, 532, 635, 780, 830, 980, 1064nm)

**Ordering Information**

Contact Ascentta with your custom configuration needs.

PMFC	Type	Wavelength	Coupler Ratio	Port	Package	Fiber Type	Cable Type	Fiber Length	Connector
PMFC (or PMCP)	S=Standard	480=480	50=50/50	12=1x2	A60=φ3.0 x	PM=PM Panda	B=250um	05=0.5m	NE=None
		532=532	20=20/80	22=2x2	L60		O=400um	10=1.0m	FA=FC/APC
		635=635	10=10/90		A76= φ3.0 x	X= Others	L=900um	15=1.5m	FC=FC/PC
		780=780	05=05/95	X= Others	L76		W=2mm	20=2.0m	SA=SC/APC
		830=830	02=02/98				H=3mm	30=3.0m	SC=SC/PC
		980=980	01=01/99		X=Others				ST=ST/PC
		10=1064						X=Others	LA=LC/APC
		X: Others	X=Others						LC=LC/PC
									X=Others

Contact Ascentta for all your custom design needs.