

SINGLE-MODE 4-PORT OPTICAL CIRCULATOR (1310, 1480, 1550, or 1590nm)

Specifications

Contact Ascentta with your custom specification needs.

Parameter		Unit	Value
Wavelength		nm	1310±30, or 1480±30, or 1550±30, or 1590±30
Transmitting Direction		-	1→2, 2→3, 3→4
Isolation (23°C, All SOP) (4→3, or 3→2, or 2→1)	Peak	dB	50
	Min	dB	40
Insertion Loss (23°C, All SOP) (1→2, or 2→3, or 3→4)	Typ.	dB	0.8
	Max	dB	1.0
PDL	Max	dB	0.15
PMD	Max	ps	0.10
Return Loss	Min	dB	55
Directivity (1→4, or 1→3, or 2→4, or 3→1, or 4→2, or 4→1)	Min	dB	50
Optical Power Handling	Max	mW	300
Package Dimension		mm	W6 x T6 x L60
Operating Temperature		°C	-5 to 70
Storage Temperature		°C	-40 to 85

* The above specifications are for parts without connectors. Adding connectors can affect the IL, RL, & PDL.

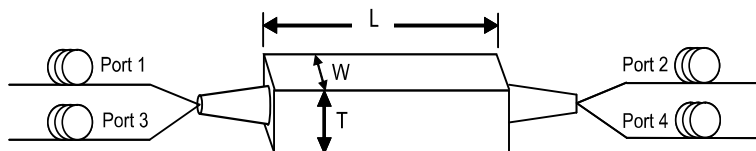
* SOP=State Of Polarization

Ordering Information

Contact Ascentta with your custom configuration needs.

CIR	Port	Wavelength	Fiber Type	Fiber Length	Connector	Package
CIR	4=4-Port	10=1064nm	B= SMF-28, 250um	10=1.0m	NE=None	Blank = Standard
		13=1310nm	L= SMF-28, 900um	15=1.5m	FA=FC/APC	
		14=1480nm	H1B=H1-1060, 250um	20=2.0m	FC=FC/PC	X=Others
		15=1550nm	H1L=H1-1060, 900um	30=3.0m	SA=SC/APC	
		159=1590nm			SC=SC/PC	
		CL=C+L Band	X=Others	X=Others	ST=ST/PC	
		1625=1625nm			LA=LC/APC	
		X=Others			LC=LC/PC	
					X=Others	

Package Dimensions



Contact Ascentta for all your custom design needs.