

## SINGLE-MODE 3-PORT OPTICAL CIRCULATOR (1310, 1480, 1550, or 1590nm)

### Specifications

Contact Ascentta with your custom specification needs.

Parameter	Unit	Value	
Wavelength	nm	1310±30, or 1480±30, or 1550±30, or 1590±30	
Transmitting Direction	-	1→2, 2→3	
Isolation (23°C, All SOP) (2→1, or 3→2)	Peak	dB	50
	Min	dB	40
Insertion Loss (23°C, All SOP) (1→2, or 2→3)	Typ.	dB	0.6
	Max	dB	0.8
PDL	Max	dB	0.15
PMD	Max	ps	0.10
Return Loss	Min	dB	55
Directivity (1→3, or 3→1)	Min	dB	55
Optical Power Handling	Max	mW	300
Operating Temperature		°C	-5 to 70
Storage Temperature		°C	-40 to 85

\* The above specifications are for parts without connectors. Adding connectors can affect the IL, RL, & PDL.

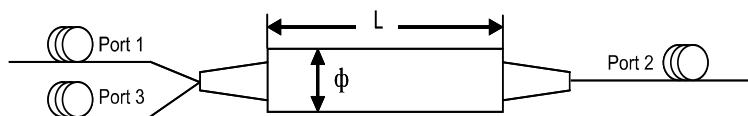
\* SOP=State Of Polarization

### Ordering Information

Contact Ascentta with your custom configuration needs.

CIR	Port	Wavelength	Fiber Type	Fiber Length	Connector	Package
CIR	3=3-Port	10=1064nm	B= SMF-28, 250um	10=1.0m	NE=None	Blank = Standard (Φ5.5 x L50)
		13=1310nm	L= SMF-28, 900um	15=1.5m	FA=FC/APC	
		14=1480nm	H1B=H1-1060, 250um	20=2.0m	FC=FC/PC	5.5x38 = Mini (Φ5.5 x L38)
		15=1550nm	H1L=H1-1060, 900um	30=3.0m	SA=SC/APC	
		159=1590nm	X=Others	X=Others	SC=SC/PC	X=Others
		CL=C+L Band			ST=ST/PC	
		1625=1625nm			LA=LC/APC	
		X=Others			LC=LC/PC	
					X=Others	

### Package Dimensions



Contact Ascentta for all your custom design needs.

## SINGLE-MODE 3-PORT OPTICAL CIRCULATOR (2000nm)

### Specifications

Contact Ascentta with your custom specification needs.

Parameter	Unit	Value
Wavelength	nm	2000±30
Transmitting Direction	-	1→2, 2→3
Isolation (23°C, All SOP) (2→1, or 3→2)	Min dB	16
Insertion Loss (23°C, All SOP) (1→2, or 2→3)	Max dB	1.5
PDL	Max dB	0.2
Return Loss	Min dB	50
Directivity (1→3, or 3→1)	Min dB	40
Optical Power Handling	Max W	1, or 2, or 5
Peak Power for ns Pulse	Max KW	10
Package Dimension	mm	39L x 17W x 12T
Operating Temperature	°C	-5 to 70
Storage Temperature	°C	-40 to 85

\* The above specifications are for parts without connectors. Adding connectors can affect the IL, RL, & PDL.

\* Adding connectors limits power to 1W.

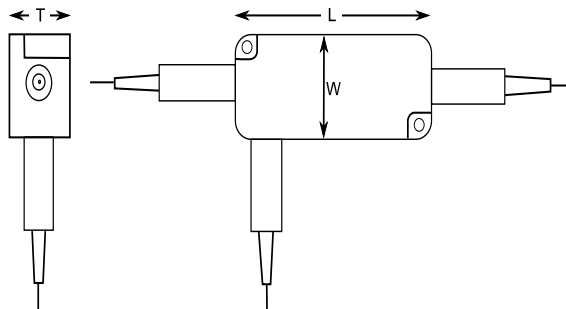
\* SOP=State Of Polarization

### Ordering Information

Contact Ascentta with your custom configuration needs.

CIR	Port	Wavelength	Fiber Type	Fiber Length	Connector	Power	Power Type
CIR	3=3-Port	20=2000nm X=Others	B= SMF-28, 250um L= SMF-28, 900um X=Others	10=1.0m 15=1.5m 20=2.0m 30=3.0m X=Others	NE=None FA=FC/APC FC=FC/PC SA=SC/APC SC=SC/PC ST=ST/PC LA=LC/APC LC=LC/PC X=Others	1W=1W 2W=2W 5W=5W X=Others	Pulse = Pulse CW=Continuous Wave

### Package Dimensions



Contact Ascentta for all your custom design needs.

## SINGLE-MODE 3-PORT OPTICAL CIRCULATOR (C+L Band)

### Specifications

Contact Ascentta with your custom specification needs.

Parameter	Unit	Value
Wavelength	nm	1530–1610
Transmitting Direction	-	1→2, 2→3
Isolation (23°C, All SOP) (2→1, or 3→2)	Peak	dB
	Min	dB
Insertion Loss (23°C, All SOP) (1→2, or 2→3)	Typ.	dB
	Max	dB
PDL	Max	dB
PMD	Max	ps
Return Loss	Min	dB
Directivity (1→3, or 3→1)	Min	dB
Optical Power Handling	Max	mW
Operating Temperature	°C	-5 to 70
Storage Temperature	°C	-40 to 85

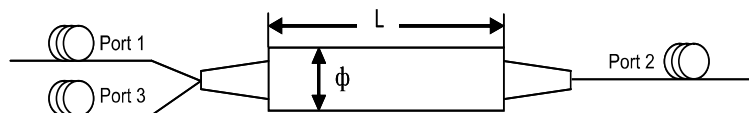
\* The above specifications are for parts without connectors. Adding connectors can affect the IL, RL, & PDL.  
\* SOP=State Of Polarization

### Ordering Information

Contact Ascentta with your custom configuration needs.

CIR	Port	Wavelength	Fiber Type	Fiber Length	Connector	Package
CIR	3=3-Port	10=1064nm	B= SMF-28, 250um	10=1.0m	NE=None	Blank = Standard (Φ5.5 x L50)
		13=1310nm	L= SMF-28, 900um	15=1.5m	FA=FC/APC	
		14=1480nm	H1B=H1-1060, 250um	20=2.0m	FC=FC/PC	5.5x38 = Mini (Φ5.5 x L38)
		15=1550nm	H1L=H1-1060, 900um	30=3.0m	SA=SC/APC	
		159=1590nm	X=Others	X=Others	SC=SC/PC	X=Others
		CL=C+L Band			ST=ST/PC	
		1625=1625nm			LA=LC/APC	
		X=Others			LC=LC/PC	
					X=Others	

### Package Dimensions



Contact Ascentta for all your custom design needs.

## SINGLE-MODE 3-PORT OPTICAL CIRCULATOR (1064nm)

### Specifications

Contact Ascentta with your custom specification needs.

Parameter		Unit	Value
Wavelength		nm	1064±5
Transmitting Direction		-	1→2, 2→3
Isolation (23°C, All SOP) (2→1, or 3→2)	Peak	dB	30
	Min	dB	20
Insertion Loss (23°C, All SOP) (1→2, or 2→3)	Typ.	dB	2.0
	Max	dB	2.2
PDL	Max	dB	0.20
PMD	Max	ps	0.10
Return Loss	Min	dB	45
Directivity (1→3, or 3→1)	Min	dB	50
Optical Power Handling	Max	mW	300
Package Dimension		mm	W8 x H8 x L34
Operating Temperature		°C	-5 to 70
Storage Temperature		°C	-40 to 85

\* The above specifications are for parts without connectors. Adding connectors can affect the IL, RL, & PDL.

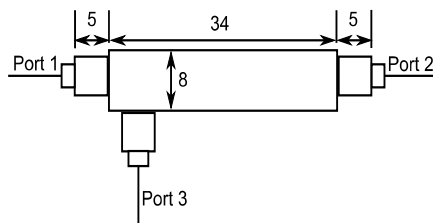
\* SOP=State Of Polarization

### Ordering Information

Contact Ascentta with your custom configuration needs.

CIR	Port	Wavelength	Fiber Type	Fiber Length	Connector	Package
CIR	3=3-Port	10=1064nm	B= SMF-28, 250um	10=1.0m	NE=None	Blank = Standard
		13=1310nm	L= SMF-28, 900um	15=1.5m	FA=FC/APC	
		14=1480nm	H1B=H1-1060, 250um	20=2.0m	FC=FC/PC	X=Others
		15=1550nm	H1L=H1-1060, 900um	30=3.0m	SA=SC/APC	
		159=1590nm	X=Others	X=Others	SC=SC/PC	
		CL=C+L Band			ST=ST/PC	LA=LC/APC
		1625=1625nm			LC=LC/PC	
		X=Others			X=Others	

### Package Dimensions



Contact Ascentta for all your custom design needs.

## SINGLE-MODE 4-PORT OPTICAL CIRCULATOR (1310, 1480, 1550, or 1590nm)

### Specifications

Contact Ascentta with your custom specification needs.

Parameter		Unit	Value
Wavelength		nm	1310±30, or 1480±30, or 1550±30, or 1590±30
Transmitting Direction		-	1→2, 2→3, 3→4
Isolation (23°C, All SOP) (4→3, or 3→2, or 2→1)	Peak	dB	50
	Min	dB	40
Insertion Loss (23°C, All SOP) (1→2, or 2→3, or 3→4)	Typ.	dB	0.8
	Max	dB	1.0
PDL	Max	dB	0.15
PMD	Max	ps	0.10
Return Loss	Min	dB	55
Directivity (1→4, or 1→3, or 2→4, or 3→1, or 4→2, or 4→1)	Min	dB	50
Optical Power Handling	Max	mW	300
Package Dimension		mm	W6 x T6 x L60
Operating Temperature		°C	-5 to 70
Storage Temperature		°C	-40 to 85

\* The above specifications are for parts without connectors. Adding connectors can affect the IL, RL, & PDL.

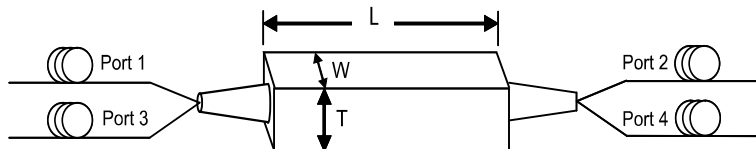
\* SOP=State Of Polarization

### Ordering Information

Contact Ascentta with your custom configuration needs.

CIR	Port	Wavelength	Fiber Type	Fiber Length	Connector	Package
CIR	4=4-Port	10=1064nm	B= SMF-28, 250um	10=1.0m	NE=None	Blank = Standard
		13=1310nm	L= SMF-28, 900um	15=1.5m	FA=FC/APC	
		14=1480nm	H1B=H1-1060, 250um	20=2.0m	FC=FC/PC	X=Others
		15=1550nm	H1L=H1-1060, 900um	30=3.0m	SA=SC/APC	
		159=1590nm			SC=SC/PC	
		CL=C+L Band	X=Others	X=Others	ST=ST/PC	
		1625=1625nm			LA=LC/APC	
		X=Others			LC=LC/PC	
					X=Others	

### Package Dimensions



Contact Ascentta for all your custom design needs.

## SINGLE-MODE N-PORT OPTICAL CIRCULATOR (1310, 1480, 1550, or 1590nm)

### Specifications

Contact Ascentta with your custom specification needs.

Parameter	Unit	Value
Wavelength	nm	1310±30, or 1480±30, or 1550±30, or 1590±30
Transmitting Direction	-	1→2, 2→3, ... N-1→N
Isolation (23°C, All SOP) (2→1, or 3→2, ... N→N-1)	Peak	dB
	Min	dB
Insertion Loss (23°C, All SOP) (1→2, or 2→3, ... N-1→N)	Typ.	dB
	Max	dB
PDL	Max	dB
PMD	Max	ps
Return Loss	Min	dB
Directivity (a & b not consecutive: a→b, or b→a)	Min	dB
Optical Power Handling	Max	mW
Package Dimension	mm	75 x 32 x 10
Operating Temperature	°C	-5 to 70
Storage Temperature	°C	-40 to 85

\* The above specifications are for parts without connectors. Adding connectors can affect the IL, RL, & PDL.

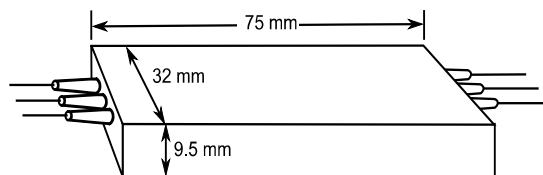
\* SOP=State Of Polarization

### Ordering Information

Contact Ascentta with your custom configuration needs.

CIR	Port	Wavelength	Fiber Type	Fiber Length	Connector	Package
CIR	3=3-Port	10=1064nm	B= SMF-28, 250um	10=1.0m	NE=None	Box = Standard Box
	4=4-Port	13=1310nm	L= SMF-28, 900um	15=1.5m	FA=FC/APC	
	5=5-Port	14=1480nm	H1B=H1-1060, 250um	20=2.0m	FC=FC/PC	X=Others
	6=6-Port	15=1550nm	H1L=H1-1060, 900um	30=3.0m	SA=SC/APC	
	7=7-Port	159=1590nm			SC=SC/PC	
	8=8-Port	CL=C+L Band	X=Others	X=Others	ST=ST/PC	
	1625=1625nm			LA=LC/APC		
	X=Others			LC=LC/PC	X=Others	

### Package Dimensions



Package shown with 6 ports.

Contact Ascentta for all your custom design needs.