

POLARIZATION MAINTAINING (PM) TAP COUPLER (1310, or 1550nm)

Specifications

Contact Ascentta with your custom specification needs.

Parameter	Unit	1 x 2	2 x 2
Wavelength	nm	1310, 1550	
Bandwidth	nm	±20	
Excess Loss	dB	0.6	1.0
Insertion Loss (23°C)	Typ. dB	0.4	0.7
	Max dB	0.6	0.9
Extinction Ratio (Both axes/Slow axis only)	Min dB	18/22	
Return Loss	Min dB	50	
Directivity	Min dB	50	
Optical Power Handling	Max mW	300	
Fiber Type	-	PM panda fiber	
Operating Temperature	°C	-5 to 70	
Storage Temperature	°C	-40 to 85	

* The above specifications are for parts without connectors. Adding connectors can affect the IL, RL, & ER.

* Connector key is aligned to slow axis.

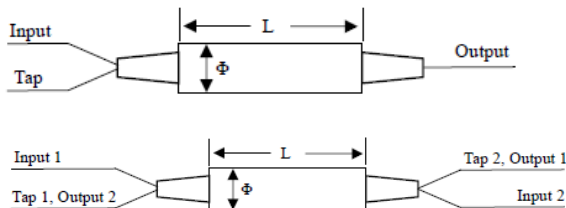
Ordering Information

Contact Ascentta with your custom configuration needs.

PMTC	Type	Wavelength	Ports	Coupling Ratio	Fiber Type	Fiber Length	Connector
PMTC	R=Reflect (Both axes working)	13=1310nm 15=1550nm	12=1x2 22=2x2	50=50/50 40=40/60 30=30/70 20=20/80 10=10/90 05=5/95 01=1/99	PMB=PM Panda, 250um PML=PM Panda, 900um	10=1.0m 15=1.5m 20=2.0m 30=3.0m	NE=None FA=FC/APC FC=FC/PC SA=SC/APC SC=SC/PC ST=ST/PC LA=LC/APC LC=LC/PC X=Others
	P=Pass (Fast axis blocked)	X=Others		X=Others	X=Others	X=Others	

Package Dimensions

PMTC-R:



PMTC-P:

